

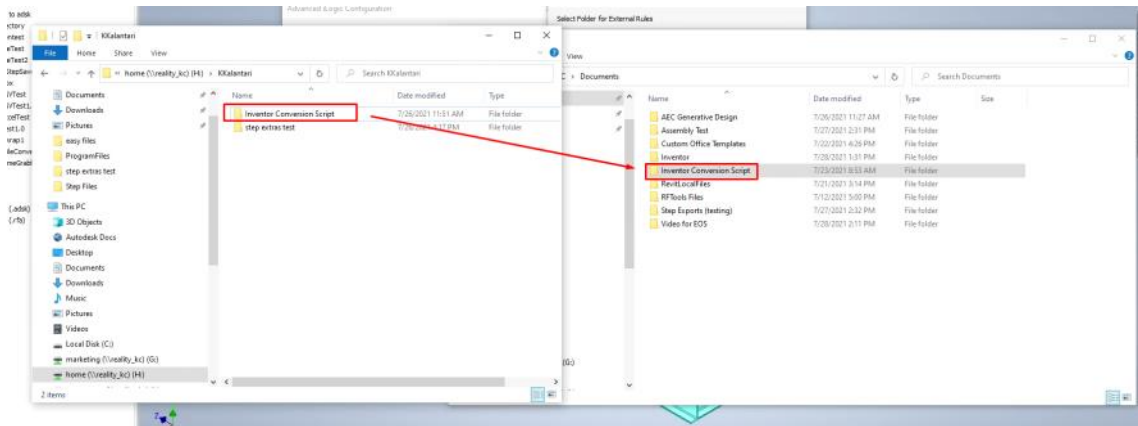
Inventor Conversion Script First Time Setup

Wednesday, July 28, 2021 4:11 PM

FIRST TIME SETUP

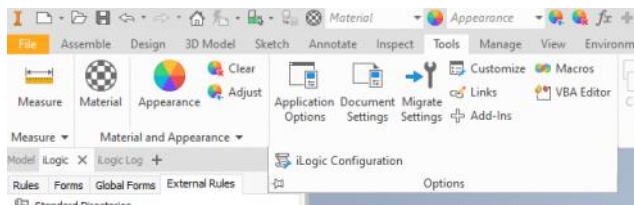
Navigate to "H:\KKalantari" and copy the entire "Inventor Conversion Script" to be inside your local Documents folder

Only copy! Do not edit or move any files from inside the "H:\KKalantari" directory☺

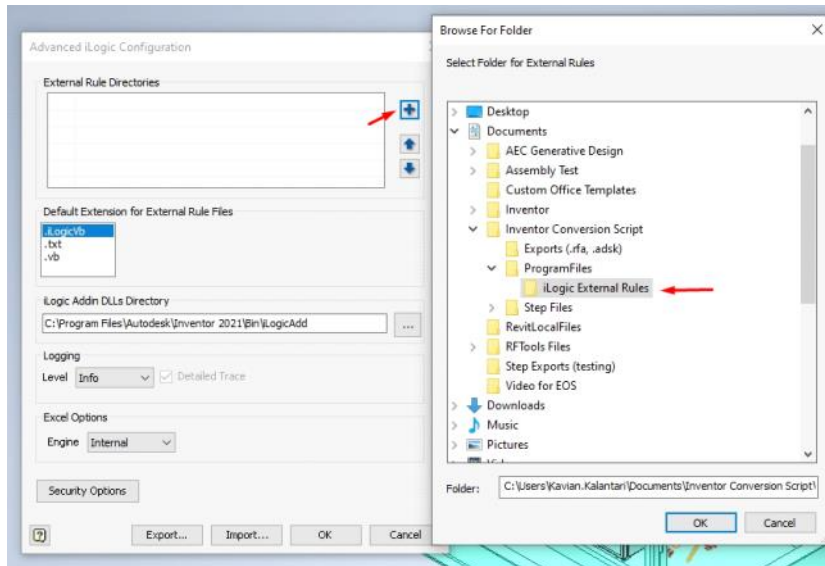


Open Inventor and go to:

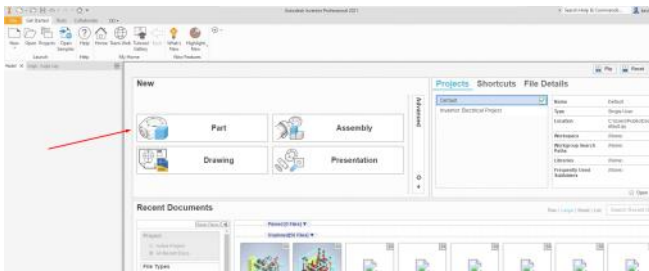
Tools -> Options -> iLogic Configuration



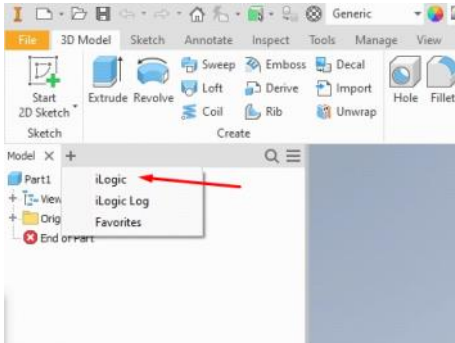
Click the "plus" icon and browse for the folder "iLogic External Rules" inside of the folder you just copied



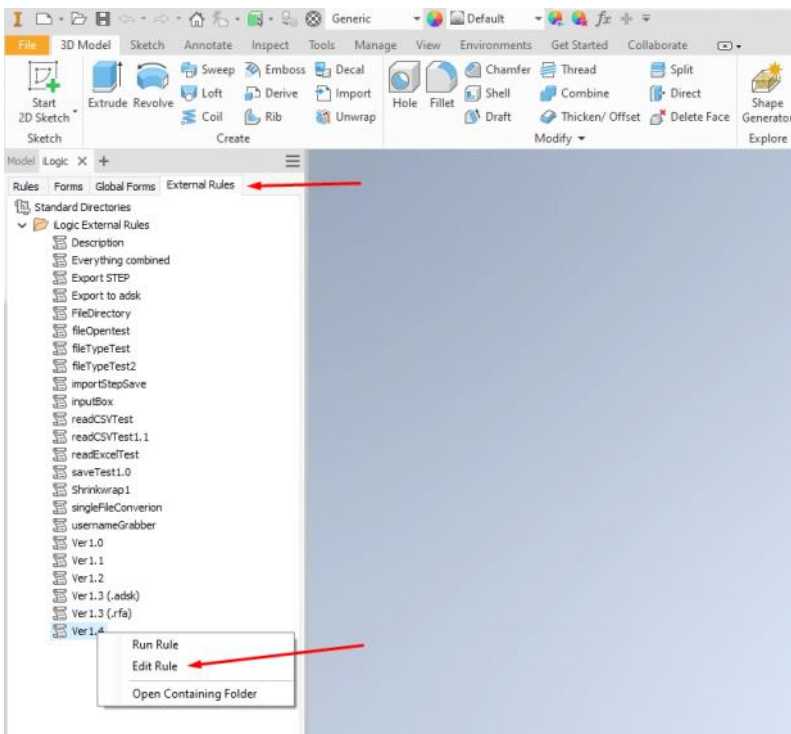
Click "Part" to create a standard part (only done to be able to access iLogic within Inventor)



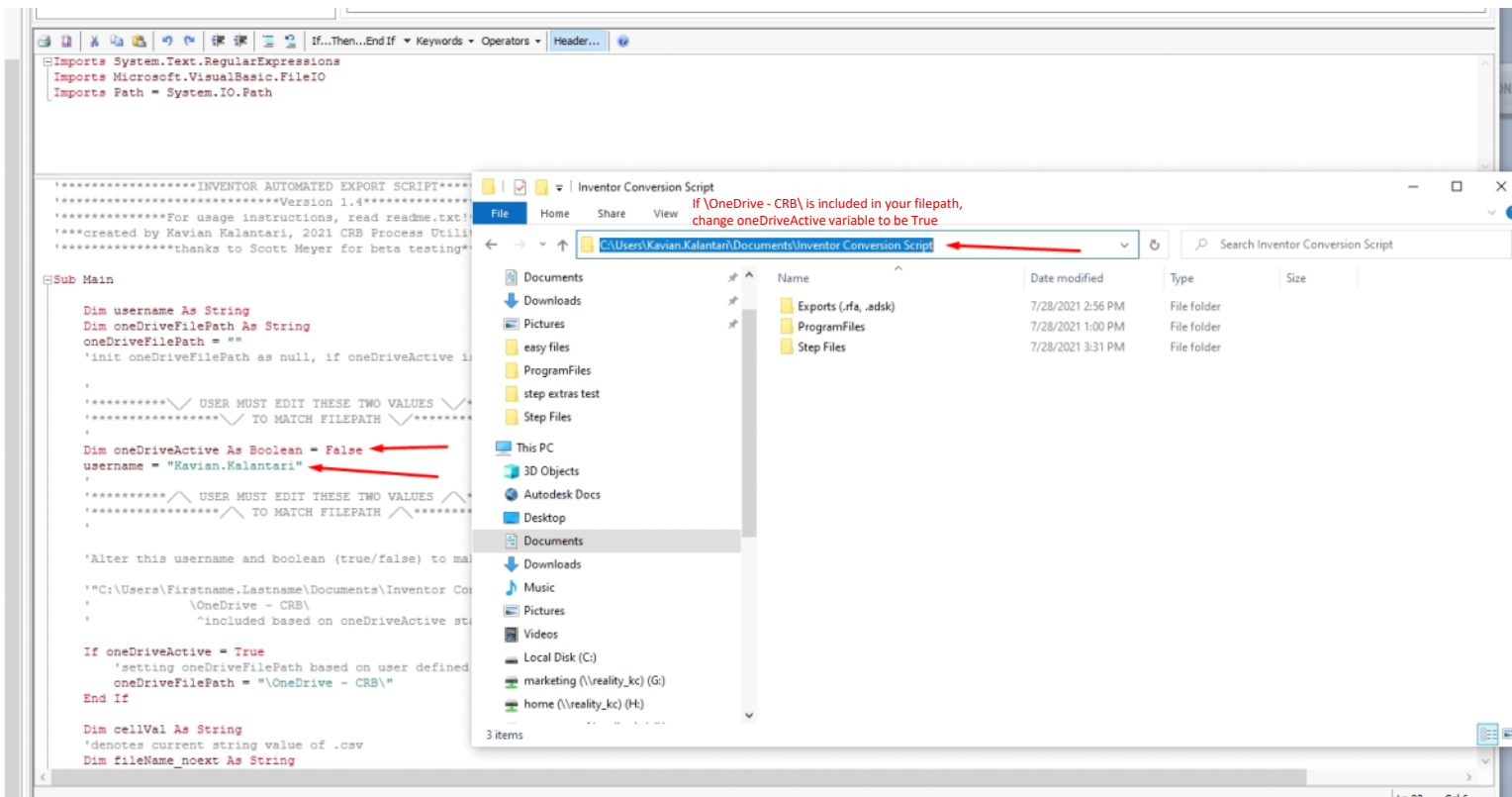
Click on the plus next to model, and select "iLogic"



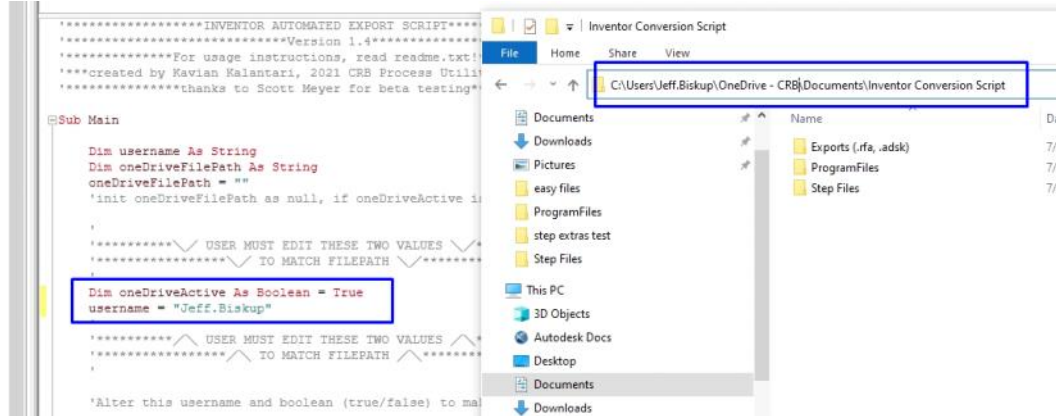
Navigate to "External Rules", right click the most recent version (currently Ver1.5), and select "Edit Rule"



Open file explorer and browse to your documents directory where you have the "Inventor Conversion Script" installed



Match the current directory by editing your username, and checking to see if you need to change the "False" to "True". Read the commented lines in code for more assistance (if your filepath is something weird (I've seen "\OneDrive - CRB(1)\") then you will also have to edit the oneDriveFilePath variable to match).



For instructions on how to actually use this utility, read the User Guide.

For more technical assistance on setting up this utility, contact Kavian Kalantari.